

# ROOTS RSB6000

## Road Sweeper



## PRODUCTIVE & EFFICIENT



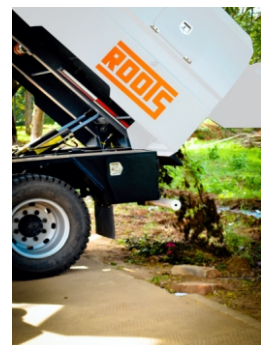
Large side broom with flexible head



Water Jet for Dust Suppression



Suction Ports



Hopper Dumping

# ROOTS ROAD SWEEPER

## RSB 6000

### OVERALL DIMENSIONS (CHASSIS DEPENDENT)

Length	-	7200 mm
Height	-	3000 mm
Width	-	2300 mm

### DEBRIS HOPPER

Capacity	-	6 Cubic Metres (Optional 6.5 M3)
Water Tank	-	1000 Litres (Additional - 800 Ltrs Optional)
Dumping Height	-	1100 mm
Dumping Tilt Angle	-	52°
Dumping	-	Hydraulic
Dumping Controls	-	In Cab
Inspection Doors	-	One on Each Side of Hopper
Construction	-	Stainless Steel
Warning	-	Overload

### SWEEPING EQUIPMENT

Side Broom	Φ 600 mm Φ 700 Optional)
Side Broom Type	Single Segment Steel Tined
Main Broom	Φ 400mm x 1200mm Length
Main Broom Type	Cylindrical PP Roller Broom

### Sweeping Width

#### with Standard 600 mm Dia Side Brush

Overall Sweeping width (with 2 Side Brushes)	-	3000 mm
with One side Brush	-	2200 mm

#### with Optional 700 mm Dia Side Brush

Overall Sweeping width (with 2 Side Brushes)	-	3200 mm
with One side Brush	-	2300 mm

Broom Drive	-	Hydraulic Motor
Direction Change	-	Hydraulic Cylinder
Suction Nozzle Width	-	2 X 750mm
Suction Nozzle Type	-	Independent Suction Nozzle
Operation Direction	-	Forward
Suction Hose	-	Φ 250mm
Hose Construction	-	Reinforced Moulded Rubber
Wander Hose	-	Φ150mm x 3000mm Length
Working Speed	-	0 to 10 Kmph (Progressively Variable)
Controls	-	Hydraulic Raise & Lower (SB & SH)

### AUXILIARY ENGINE

Manufacturer	-	Ashok Leyland
Model	-	ALHT4CTIC3
Induction System	-	Turbo
Combustion System	-	Direct Injection Diesel
Number of cylinders	-	4
Displacement	-	4000 cc
Power Rating	-	101 HP @ 2200 rpm
Cooling System	-	Liquid Cooled
Starter	-	12 Volts, 4.8 Kw
Alternator	-	12 Volts, 50 Amp
Battery	-	12 Volts, 85 Ah
Oil Filter	-	Spin-on
Air Cleaner	-	Dry Type
Safety Shutdown	-	Automatic

### SUCTION EQUIPMENT

Fan Type	-	Centrifugal Fan
Housing Construction	-	Welded Mild Blade
Liner	-	Replaceable Rubber

### HYDRAULIC SYSTEM

Type	-	Gear Pump
Fluid Capacity	-	70 Litres
Drive	-	Direct Drive
Filter	-	10 Micron Spin-on
Strainer	-	80 Mesh

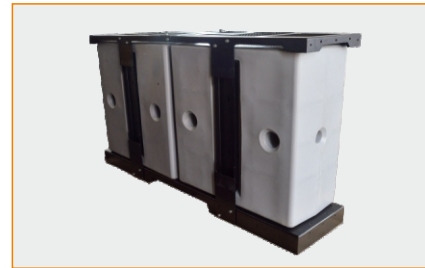
### STANDARD EQUIPMENT

- Spare Wheel & Tyre (supplied separately)
- Auxiliary Engine Safety Shutdown
- Working Lights to each side, rear and Aux Engine Bay
- Additional High Mounted Stop & Indicator Lights
- Two Rotating Amber Beacons
- Cleaning Hose for Washing Truck

### CAB & CHASSIS

Ashok Leyland 1415 BOSS

### Options Available



Additional Water Tank



Additional High Pressure Jet Cleaner



Front Spray Bar

Roots reserves the right to make any changes considered necessary for the purposes of improvement at any time or for any reason without prior notice, in line with its policy of continuous product development and progress.

**Our Product Range** - Sweepers, Scrubber-Driers, Vacuum Cleaners, Single Disc Scrubbers, Mini Floor Washers, High Pressure Water Jet Cleaners, City Sweepers, Bins, Mops & Trolleys.



www.vclean.co.in

### Vismaya Traders

No 15 Corporation Complex Ground Floor,  
Raju Naidu Street, Tatabad, Coimbatore - 641012  
(Opposite Kokarako Hotel)

Ph: +91-91507-99999 | Tel: 0422-4399899

Email: info@vismayatradrs.com

vclean.sales@gmail.com



MKT/10/2020